

BUDGET FOR 2022-2023



\$4.7 MILLION

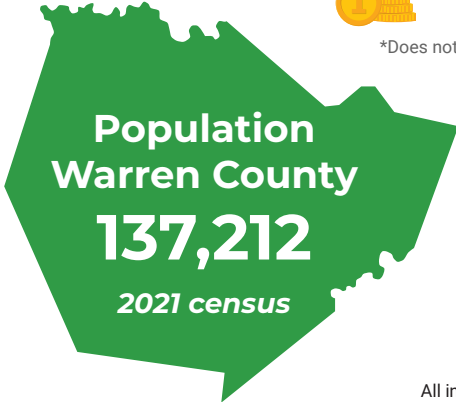


\$34
per tax payer
per year in
Warren County



\$93
National Per
Capital Expense
per resident

*Does not include Operation Pride allocation of \$450,000



National average
for community of
137,000 residents
\$11.6 MILLION

EMPLOYEES 54 FULL TIME EMPLOYEES

89 total including part time
and seasonal workers.

National Average of full time employees per 10,000 residents
8.9 National Average **115** Warren County average

All information provided in this section from National Recreation and Park Association 2022 NRPA Agency Performance Review

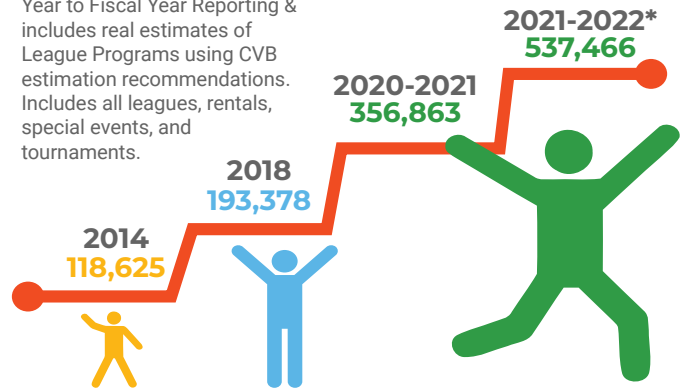
PROPERTIES MAINTAINED



Acres of Park Land per 1000 residents (national average) = 10.4
Warren County = 1,424.8

PARTICIPATION COMPARISON

*Transitioned from Calendar Year to Fiscal Year Reporting & includes real estimates of League Programs using CVB estimation recommendations. Includes all leagues, rentals, special events, and tournaments.

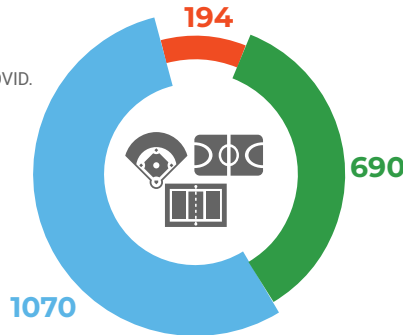


FY 2020-2021 RENTAL STATS

Rentals/Events were down due to COVID.

RENTALS: 1954

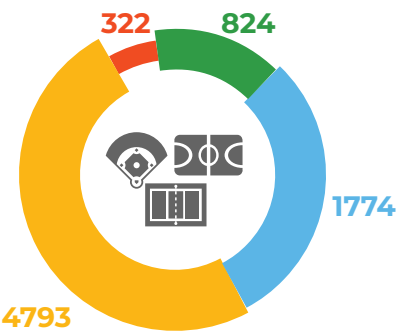
- Gym Rentals
- Ball Field Rentals
- Shelter Rentals



FY 2021-2022 RENTAL STATS

RENTALS: 2406

- Tennis Court (New Facility)
- Gym Rentals
- Ball Field Rentals
- Shelter Rentals



SPECIAL EVENTS & TOURNAMENTS: CY 2021

INDOOR

40

OUTDOOR

48



SPECIAL EVENTS & TOURNAMENTS: CY 2022

INDOOR

59

OUTDOOR

66

EVENTS SCHEDULED FOR 2023 (at time of this printing)

58

OUTDOOR SPECIAL EVENTS & TOURNAMENTS

51

INDOOR SPECIAL EVENTS & TOURNAMENTS

Check out back page for more info!

CHECK OUR WEBSITE

for additional ongoing and ever-changing improvements to the Warren County Parks:

warrencountyky.gov



2022 PARK'S FACT SHEET *(continued)*

NEW PROGRAMS

Assisted in Tornado Recovery throughout December 2021 through March 2022 (Sears Relief Center, Light Towers, Storm Cleanup, Food Assistance Programs)

Installed new dugout benches and dugout shades at Griffin Park

Added new disc golf course signs and basket flags to PMP, MBP, EWP, and BGP courses

New musical playground at Moss Middle School Jennings Creek



Continued to enhance Feed America Program (became primary Warren County distribution agency); added x 4 more satellite distribution areas



Added Thor Guard Lighting Detection Systems at EWP, PMP, and MBP Parks

Added new disc golf course t-pads, signs, and championship hole to MBP Course (Tony Walker Financial Sponsored Work)

Partnership with Warren County Regional Airport Maintenance

Assisted WC Clerk Office with Primary and General election setup at 7 sites

Soap Box Derby Track upgrades at PMP, paved new track, enhanced WIFI to track, created new building (finish line)



Sealed and striped parking lots at EWP Park and Phil Moore Park

Worked with WC Sheriff Office, Lifeskills, and WC Attorney on Homeless Encampment Relocation Efforts



Awarded \$25,000.00 through State of KY to put toward design and development of new Dual Salom Course at Weldon Peete Park



Added new Security Systems and Cameras to BGP, Ed Spear, Phil Moore Park, MBP Park, EWP Park (buildings)

Awarded and installed new boat ramp, paved parking lot area at Weldon Peete Park

Added 4 new pickle ball courts at BGP Pickle Ball Facility



Tennis Court resurfaced at BGP

Conducted several summer camp programs with WC/BG Library that were extremely successful



Continued to expand WC / BG Library and WCPRD Thrive Program offering

Continued to offer and enhance a diverse range of both local league and special event functions.

Opened and enhanced partnership with WC/BG Library and opened new satellite branch at MBP Tennis Court

WALKING TRAILS IN SYSTEM



OUTDOOR TRAILS:

South Warren Greenways, Natcher Greenway, Buchanan Park Trail, Griffin Park Trail System (x 3 trails), Ephram White Trail, Freeman Park Trail, Ed Spear Park Trail, Phil Moore Park Trail



INDOOR WALKING TRACKS:

Gymnasium at Ephram White Park and Gymnasium & W.C. Tennis Center at Buchanan Park



AWARDS RECEIVED

- ★ Director Chris Kummer received Kentucky Recreation and Park Society Fellowship Award for 2022
- ★ Warren County Tennis Facility / Multi-Purpose Sport Complex KY USTA Facility of the Year Award 2022
- ★ Beautify the Bluegrass Award – Operation Pride – Governor's Office Award 2022 (165 WCPRD Crew)



OTHER FACTS



3 Parks with River Access Points: Johnson Park, Phil Moore Park, and Weldon Peete Park



37 Ball Fields Maintained



12 Youth Sport Leagues Chartered through WCPRD offering 18 annual programs



Park Police Program started in 2018 with one (1) full-time deputy assigned to parks



10 accessible playground locations with various features and many new pieces



3 W.C. Gyms being used as consolidated countywide polling precincts



2 W.C. Gyms Feeding America and Disaster Relief Food Box distribution point
4 Satellite Locations

Check our website for additional ongoing and ever-changing improvements to the Warren County Parks: warrencountyky.gov

